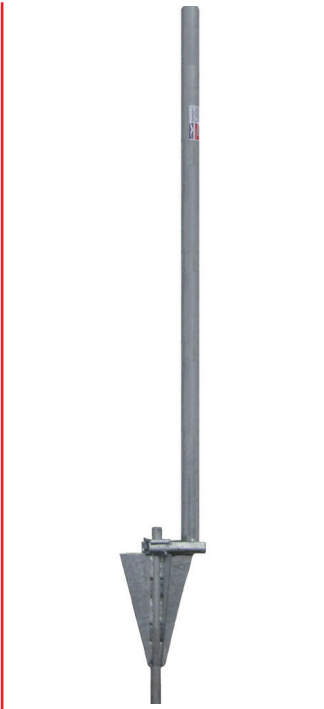
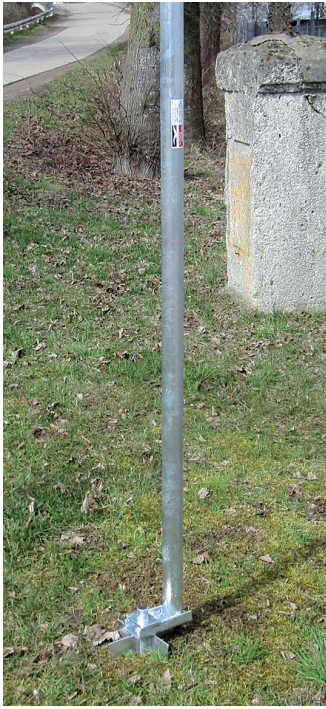


# ≡ PROFILE BOARD TERRA FIX

stable bottom attachment - fast and cost saving



# PROFILE BOARD TERRA FIX

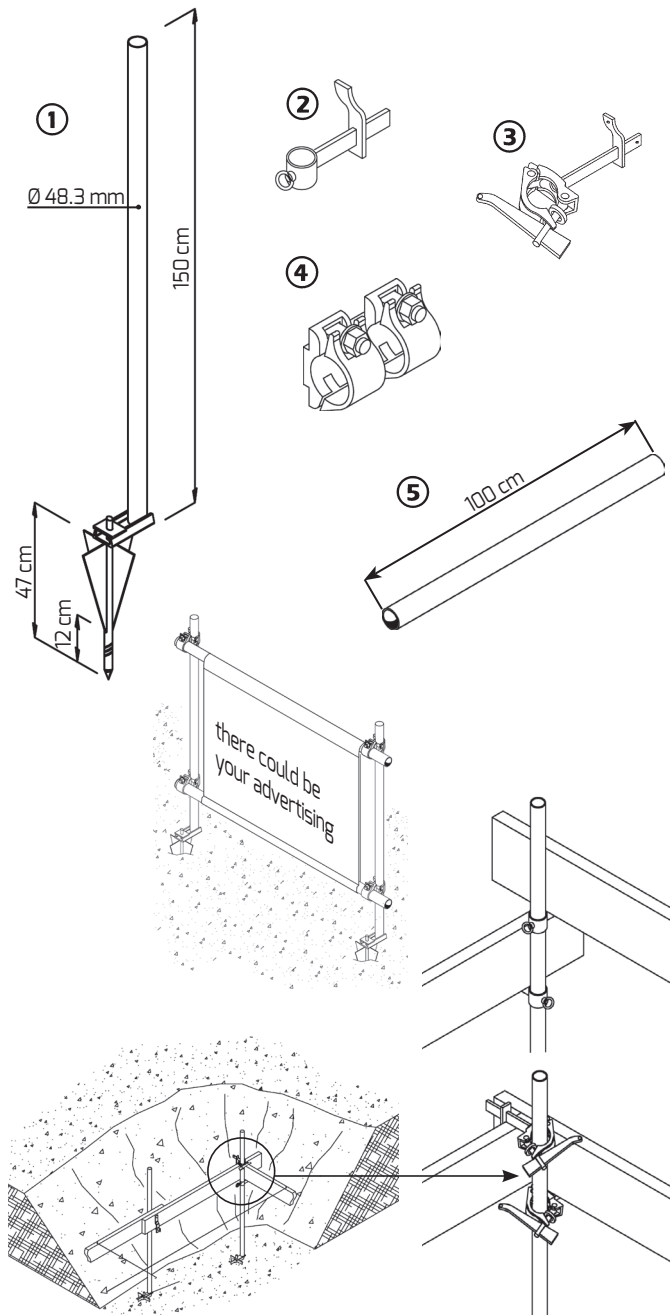
for positioning of the borders of buildings

The profile board is used in building industry for pegging and positioning the borders of a building and its building pit. The Profile Board Terra-Fix grants lots of applications, e.g. as support for signs, traffic signs, shutoff and so on. The four

„wings“ which are positioned orthogonal grant a high stability of the Terra-Fix. By drilling holes in advance into asphalt or solid rock an anchoring to this grounds is also possible. The profile board tube can be extended in exceptional cases by using

scaffold tubes and tension couplers. For creation of corners an additional guard rail clamp is necessary.

**Technical documentation:**  
none



## Spare Parts

- |  |                    |
|--|--------------------|
| ① <b>Profile Board Terra Fix</b><br>weight 9.00 kg | Ref. 10 36 00      |
| ② <b>Guard Rail Clamp</b><br>weight 1.20 kg        | Ref. 10 07 00      |
| ③ <b>Guard Rail Coupler</b><br>weight 1.40 kg      | Ref. 10 02 00      |
| <b>Accessories from Scaffolding:</b>               |                    |
| ④ <b>Tension Coupler, A/F 19</b>                   | Ref. ABKUP 6 50 02 |
| ⑤ <b>Steel-Tube</b><br>Ø 48 mm, L = 1.0 m          | Ref. ABRDR 0 00 14 |

## Modular Pallet Vario 830

(without picture) galvanized,  
weight 88.00 kg  
for storage of:  
- 28 piece Schnurgerüst Terrafix

## Your advantages:

- space saving
- by drilling holes in advance into asphalt or solid rock an anchoring to this ground is also possible

The photos of the building sites do not necessarily show the entire building site or all security precautions. These photos and drawings are not meant to be used as an example from a security point of view. Subject to technical alterations or changes in price and equipment. Reprints and photocopies are not permitted. © ALTRAD Baumann